

# P.A.C.T. PRESS

May 2010

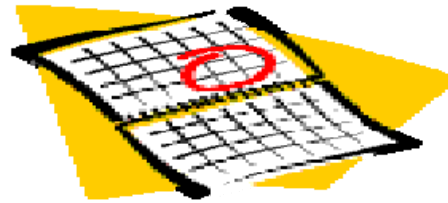
Volume 14, Issue 9

## Resource Center News

As the end of the school year approaches, please start returning the curriculum you are no longer using. Each June, we check your current year's curriculum back in and then collect your next year's selections for check out. This allows you to have them all summer giving you the option to plan your coming school year. The sooner you bring them back in, the sooner your Educational Advisor can check them back out to you. **All curriculum** is due back on Friday, May 21st. There will be **no new check outs** as of Friday, May 14th. You may want to look up what you have checked out using Destiny or stop by the front desk and ask for a print out of the curriculum you have checked out so you know what to hunt for.

Curriculum order forms for the 2010-2011 school year are available from your Educational Advisor. You will notice that we have streamlined the form to include only the most popular curriculum used by our families that is effective and thorough in teaching the concepts at each grade level. With the budget constraints, we plan on purchasing the core curriculum used by our families as needed. We do not plan to add to our current curriculum options at this time.

Please complete a separate form for each of your children to pre-select your curriculum choices and take the form (s) to your next Advisor meeting to review and get your questions answered. Curriculum order forms are due to your Educational Advisor no later than May 14th.



## END of the Year Stuff

**Family Lounge** Please remember to check the fridge for items that belong to you and remove them in a timely manner.

**Spring Fever!** As the school year winds down and the weather warms up, we ask you to resist the urge to play...at least until after your meeting with your Educational Advisor! Please continue to be diligent in completing your paperwork and keeping your scheduled meeting times. Then go have fun in the sun!

**Lost & Found**—Be sure to check the lost and found for your child's lost items before school is out. Any items left will be donated on 6/11/10.

**Dress Code**— Please take time to review the dress code in your handbook so that you are aware of acceptable warm weather clothing choices for and your student(s).

**Surveys**- you should have received a family email from us asking you to participate in an on-line survey to evaluate the PACT Program and your Educational Advisor. Please complete one per child. You and your child(ren) also have the opportunity to evaluate their P.A.C.T. teachers. Complete one survey for each teacher. Ask the front desk for a paper copy if you prefer or if you have any questions.

## Important Information

5/3-5/7 STAR Testing

5/3-7 National Teacher Appreciation Week

5/5 NWEA Informational Training, 9:30

5/7 Teen Fun Night, 6:30-8:30

5/12 CHES Meeting, 12:30—2:30

5/12 P.E. Testing, NCS Main Campus

5/12 Scholastic Book Orders due online or to front desk

5/14 The Hamburger Farm, 11:00—2:00

5/14 Curriculum Orders due to Advisors

5/15 1st Annual Duck Pluck, 11:00—4:00

5/19 KORT Mtg., 12:30—2:30

5/21 6th Annual Extravaganza, 5:30—8:30

5/24-6/4 NWEA Testing

5/25 Digging Up the Past, 9:15—12:05

5/26 Parent Seminar, Giants of Amer. Hist. 12:45—2

6/2 Piano Recital, 7:00pm, Benvenuti Theater

6/3 8th Grade Promotion, 1:00—2:00

6/3 Music and Arts Festival, PACT 1 & 2, 2:00—4:00

6/7 Roller King Family Skate & Pizza Night, 6:30—8:30

6/8 Dance Recital, 6:00pm, Benvenuti Theater

6/9 Drama class play, 6:00pm, Benvenuti Theater

# NWEA Testing

This **mandatory PACT Assessment** will specifically target your child's needs and accomplishments as well as track his or her growth over time. The results from this assessment will help you select curriculum that matches your child's ability.

**Every** student in 2nd thru 8<sup>th</sup> grade needs to schedule and sign up for NWEA Testing. The sign-up sheet will be available at the front desk beginning May 10<sup>th</sup>. Students will need to complete tests in English Language- Arts and Math.



The testing window is as follows:

2nd Grade Students	Mon., May 24	8:30—2:00	Reading
	Tues., May 25	8:30—2:00	Math
	<b>2nd Grade Students must sign up for 1 hour each day.</b>		
3rd—8th Grade Students	Wed., May 26	8:30—2:00	Reading, Language Arts, Math
	Thur., May 27	8:30—2:00	Reading, Language Arts, Math
	Fri., May 28	8:30—11:30	Reading, Language Arts, Math
	Mon., May 31	No Testing	Holiday
	Tues., June 1	8:30—2:00	Reading, Language Arts, Math
	Wed., June 2	8:30—2:00	Reading, Language Arts, Math
	Thur., June 3	8:30—2:00	Reading, Language Arts, Math
	Fri., June 4	8:30—2:00	Reading, Language Arts, Math
<b>3rd—8th Grade Students must sign up for 3 one hour testing periods.</b>			



We require all students in 2<sup>nd</sup> through 8<sup>th</sup> grade to take this assessment. Thanks for your cooperation on this. Please speak to your Educational Advisor or Lynda Malka if you have any questions. *This assessment is optional for K-1<sup>st</sup> grade students. K-1 parent teachers should discuss this option with your Educational Advisor to determine if this is appropriate for your student.*

## Duck Pluck Volunteers & Donations Needed

PACT is sponsoring a booth for the Duck Pluck Festival on May 15<sup>th</sup>! With your help, this could be a huge fundraising opportunity since PACT will keep 80% of the profit made at the booth. Our booth will be a **Balloon Stomp**. The booth will feature aired up balloons with a prize note inside. Participants will choose a balloon, stomp on it to pop it revealing the prize note for free candy, prize tickets, etc. We need your help to make this booth a success so please consider volunteering your time or resources. Below are the volunteer hours needed for the activity and items requested for donation. Of course, volunteer time and items donated with receipt will count for parent hours. If you can help, please contact Rori Wright @ 419-3788 x 117 or Lynda Malka @ 419-3788 x 102.

**Volunteer Shifts** (2 volunteers per shift):

- 10:00a.m.-12:00 (set up), 12:00—2:00, 2:00—3:30, 3:30—4:30 (tear down)

**Items Needed:**

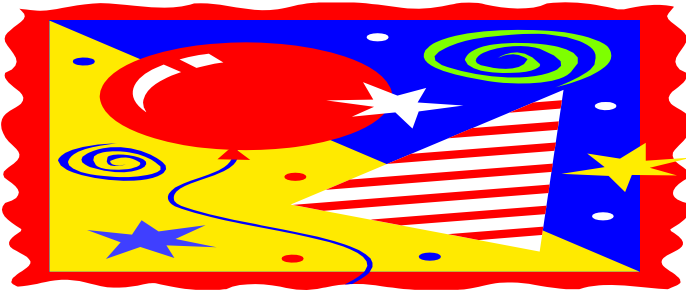
- **Large Garbage Bags**
- **Balloons:** *small-med; various shapes*



Don't forget to bring your family and friends to enjoy this great event! Saturday, May 15, 11:00—4:00!

## Yearbook Pickup

Yearbooks will be available for pickup at the Extravaganza! Come see our year in print! There will be a few copies for sale. If you have not yet purchased your yearbook you may do so at the front desk! HURRY, there is a limited supply!



## PACT's 6th Annual Open House Extravaganza

**PACT's 6th Annual Open House Extravaganza will be held Friday, May 21st from 5:30 to 8:30 PM!**

During the evening there will be student displays and entertainment, a raffle, silent auction, food for sale, both dinner and baked items, face painting, kids crafts, and a used book sale. There will also be an opportunity to pick up your yearbook!

We ask that you invite family, friends, and anyone interested in home schooling to attend this event so that they may see what a fabulous experience our students have here at PACT.

We still need donations for the raffle, auction, and bake sale.

If you can donate or would like to volunteer to work during the event, please contact Shelly Shaw at 419-3788 Ext. 101 or [sshaw@natomas.k12.ca.us](mailto:sshaw@natomas.k12.ca.us).

Please look for family emails for last minute news about the Extravaganza!



## Duck Pluck + Raffle

Ticket = Parent

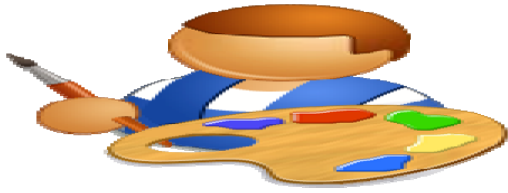


You can support Natomas Charter School and the First Annual Duck Pluck Festival by purchasing a Rubber Duck raffle ticket for \$100 and you will earn \*4 parent hours. The purchase of a Duck will also give you a chance to win up to \$10,000!

Yes! The Duck Pluck is a raffle that gives participants a 500 to 1 chance of winning \$10,000 cash! Purchase a raffle ticket for \$100, get a rubber ducky placed in a swimming pool with no more than 500 other ducks. If your duck is plucked at the end of the day, you win \*\$10,000. There is also a second and third place prize of \$2,000 and \$1,000.

You may purchase your Duck by completing a form available online at [www.duckpluck.com](http://www.duckpluck.com) and mail, fax or bring it into the Natomas Charter school's front office. Your official Duck Pluck ticket and duck number will be mailed or given to you after receipt. Please also remember to complete a parent participation record with your "duck ticket number" to receive credit for your 4 parent hours (maximum of 5 ducks = 20 hours). \* This also applies to ducks previously purchased if your parent hours have not yet been reported.

The festival is on Saturday, May 15th from 11am-4pm. Don't forget to mark your calendars to attend this fun filled event! Over 40 booths, including food vendors, carnival-like games, arts, sports and education activities, will serve the interest of all ages and all family members.



## Attention: ALL Student Artists!

The deadline is fast approaching to submit the artwork that you have entered in the Sacramento County Fair. Please take your completed works to Mrs. Valdovinos by Thursday, May 20.

**ALL WORKS WILL BE TAKEN TO THE FAIR BY A PARENT VOLUNTEER, AND WILL ALSO BE RETRIEVED FROM THE FAIR FOR YOU.**

Don't forget to go to the Fair MAY 27 - 31st to view your artwork and that of your classmates as well as enjoying the exhibits and fun that the Sacramento County Fair has to offer!



## How Are We Doing

It's that time again! Our Educational Advisors strive to meet your needs and would also like to have your feedback. Our yearly surveys are available. Your responses will help our Advisors to know what they are doing well and what they may improve on. We believe that there is always room for growth and growth is dependent upon clear, genuine feedback. Please follow the link to our survey at:

<http://www.zoomerang.com/Survey/WEB22AH5FT9S2J>

Please have all surveys complete by May 14th. We thank you in advance for your participation and support of the PACT Program!

## NWEA Testing Informational Session

You are invited to attend a free 30-minute workshop to help you understand and use the NWEA assessment tool.

After you drop your student off for STAR testing, spend some time for professional development to improve your understanding of the NWEA assessment. Learn why we test, how to understand the results and most importantly, how to make this information improve your instructional strategies. Shari Marquez Anders, an Educational Advisor for PACT will present this training.

Wednesday, May 5<sup>th</sup>, 2010  
9:30 a.m.

PACT Library

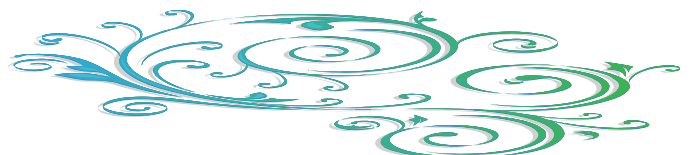
Refreshments will be served.

*Siblings are welcome to attend.*



## BoxTops for Education

You've been saving them and now it's time to turn them in! Please be sure to turn them in to the box at the front desk counter by May 21.



## Skate Night & Pizza Party



Our end of the year skate and pizza party will be held on Monday, June 7th from 6:30-8:30 at the Roller King Skate and Blade in Roseville. A sign-up sheet will be available

on Wednesday, May 12th.

Remember to fill out a registration form and include all family members who will be attending. Be sure to indicate on the sign-up sheet whether a family member is skating and select a pizza preference if you plan on eating pizza. Our fundraising money pays for this special event. Drinks and other food items will be available for purchase at the rink. Cancellations must be made by June 4 to receive a refund on the special deposit.



## Annual PACT Arts Festival

Natomas Charter School's PACT Program is proud to announce our annual Arts Festival. Our students who have been taking the violin, guitar, music appreciation, and choir classes will serenade the PACT community with their musical talents. You will also be surrounded by the beauty of the artwork from the art classes. Please plan on attending Thursday, June 3rd in PACT 1 & 2 from 2 - 4 to immerse yourselves in the sound and sights of the arts created by our talented PACT students.

## Wish List & Parent Hours

Need Parent hours?

Here's our current wish list.

- Be sure to bring your receipt and \$15 worth of supplies or cash equals 1 hour.
- Plastic Forks
- Antibacterial wipes
- Bottled Water
- Gift cards from grocery, department, Office supply stores, Home Depot, or Borders Books
- Items for Auction/Raffle for Extravaganza
- Paper Plates
- Water, Soda, Juice for the Extravaganza

If you have any questions please contact Shelly Shaw.



## Raffle Winners

Congratulations to our April PACT Raffle Winners!

Our prize winners are: Matthew Knauer, Kimberlee Jenks, Marrissa Anderson, Ashley Vang, Hunter Johnson, Owen Black, Emma Sigurdson, Priscilla Zarate, Dawson Hardy, Murphy Diefenbacher.

